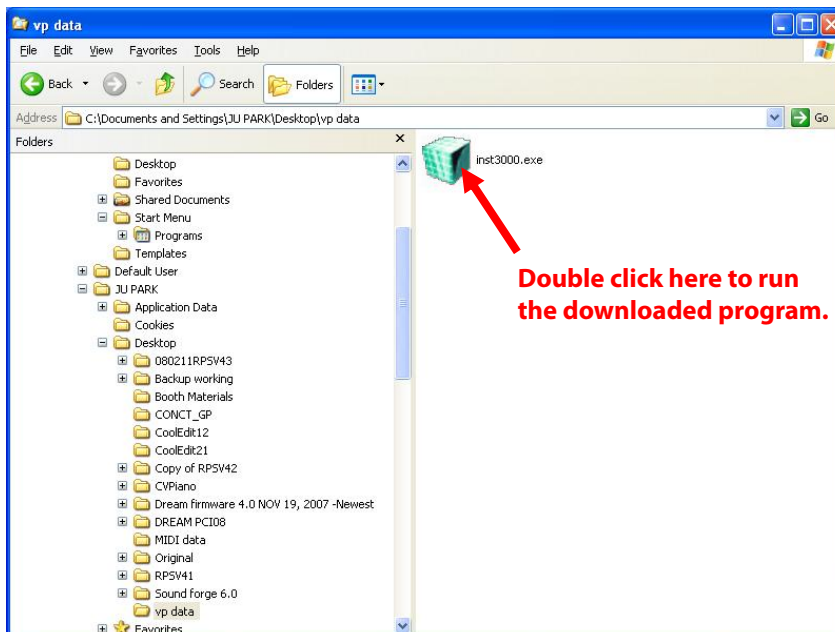


How to install VP Player system files into a SD memory card.

1. Download the latest song library into your PC from our website.
2. Put your SD memory card into your PC.
3. Double click(Run) the downloaded 'instxxxx.exe' file. The install pop-up window appears.

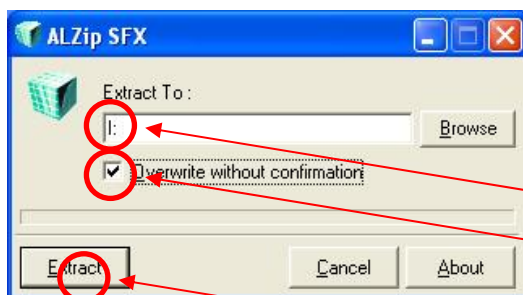
NOTE: 'xxxx' means number of the model name.

- 1) Inst_520: High Performance Portable Piano 520 series
- 2) Inst_620: High Performance Portable Piano 620 series
- 3) Inst2200: High Performance Digital Piano 2200 series
- 4) Inst3000: High Performance Moving Keys Digital Piano 3000 series



This system files cannot be used in the Moving keys piano DP100/DPR390.

4. When appearing the AL ZIP SFX pop-up window, (1) change the destination drive (You should input the location of the SD memory card drive.) and (2) check the overwrite option. (3) Press the **EXTRACT** button. Installing starts.



(1) If your SD memory card is in 'I: drive'

(2) Check this option.

(3) Click here.

NOTE

- 1) It takes 15 ~30 min to install the system file into your SD memory card.
- 2) We recommend to format(FAT32) the SD memory card before installing the system.
- 3) Before format, you need to backup data in the SD memory card.

